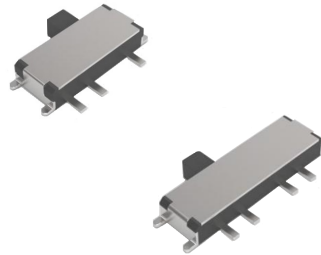


▶ Product Features

- 1P2T, 1P3T models
- Multiple length of stem
- Boss at bottom for better positioning
- RoHS Compliant



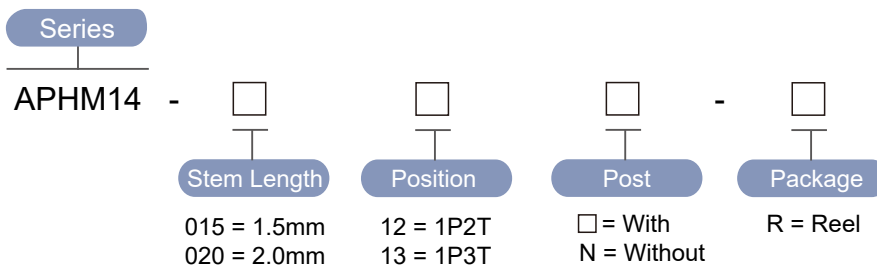
▶ Materials

Part Name	Base	Cover	Stem	Contact	Terminal
Material	LCP	Phosphor bronze Ag plated	PA46	Beryllium copper Ag plated	Phosphor Bronze Ag plated

▶ Specification

Operating Force	1P2T : 150gf ; 1P3T : 200gf
Operating Temperature Range	-20°C ~ 70°C
Storage Temperature Range	-40°C ~ 85°C
Voltage Rating	25mA, 24VDC (Switching) 300mA, 4VDC (Non-Switching)
Actuation Life Cycle	10,000 times
Insulation Resistance	100 MΩ min @ 100VDC
Dielectric Strength	100VAC for 1 minute
Contact Resistance	100mΩ max

▶ Part Number



► Diagram

NO.	Dimensions	Circuit
APHM14-xxx12		
APHM14-xxx13		