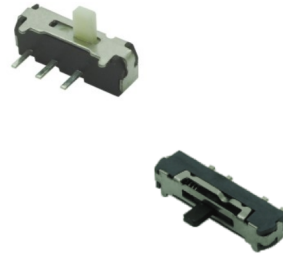


### ▶ Product Features

- 1P2T, 1P3T models
- Boss at bottom for better positioning
- RoHS Compliant



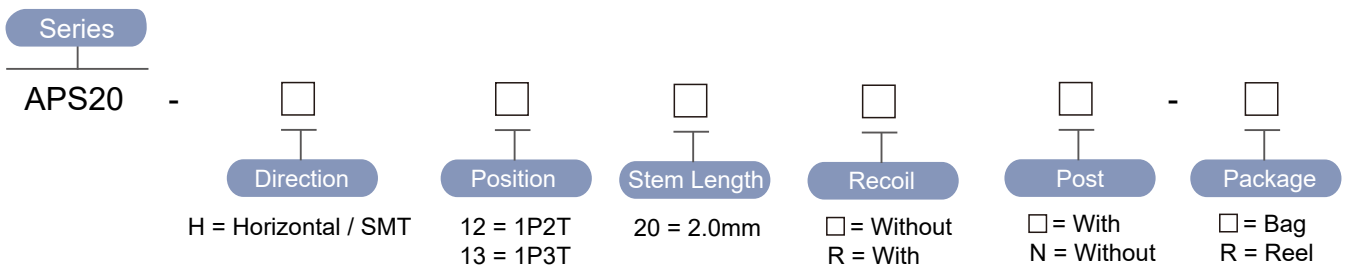
### ▶ Materials

Part Name	Base	Cover	Stem	Contact	Terminal
Material	LCP	SUS Ag plated	PA46	Beryllium copper Ag plated	Phosphor Bronze Ag plated

### ▶ Specification

Operating Force	200gf
Operating Temperature Range	-10°C ~ 60°C
Storage Temperature Range	-40°C ~ 85°C
Voltage Rating	100mA, 12VDC
Actuation Life Cycle	10,000 times
Insulation Resistance	100 MΩ min @ 100VDC
Dielectric Strength	250VAC for 1 minute
Contact Resistance	100mΩ max

### ▶ Part Number



► Diagram

NO.	Dimensions	Circuit
<p>APS20-H1220</p>		
<p>APS20-H1320</p>		