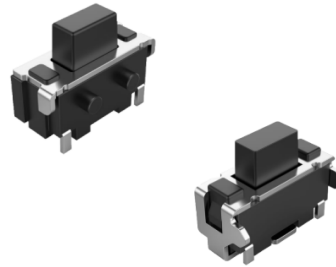


▶ Product Features

- Multiple options of force
- Support post
- High reliability
- RoHS Compliant



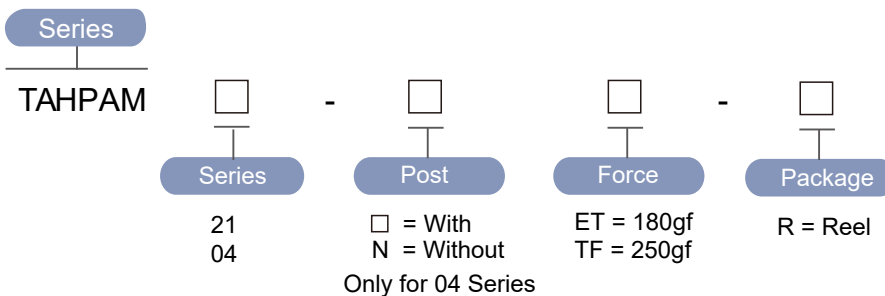
▶ Materials

Part Name	Base	Cover	Stem	Contact	Terminal
Material	LCP / PA6T	Phosphor / Brass Ag plated	PA6T	SUS Ag plated	Phosphor Bronze Ag plated

▶ Specification

Operating Force	180, 250gf
Actuator Travel	0.20 ±0.1mm
Operating Temperature Range	-20°C ~ 70°C
Storage Temperature Range	-40°C ~ 85°C
Voltage Rating	50mA, 12VDC
Actuation Life Cycle	180gf : 50,000 times ; 250gf : 30,000 times
Insulation Resistance	100 MΩ min @ 100VDC
Dielectric Strength	250VAC for 1 minute
Contact Resistance	100mΩ max

▶ Part Number



► Diagram

NO.	Dimensions	Circuit
TAHPAM21	<p>Dimensions for TAHPAM21:</p> <ul style="list-style-type: none"> Top view: 4.5 (width), 4.3 (length) Side view: 3.5 (width), 1.95 (height) Front view: 1.85 (width), 2.5 (height) PCB Layout: 4.9 (width), 4.1 (length), 2-Ø0.9 (holes) 	<p>Circuit diagram for TAHPAM21: Terminal ① is connected to Terminal ②.</p>
TAHPAM04	<p>Dimensions for TAHPAM04:</p> <ul style="list-style-type: none"> Top view: 4.5 (width), 4.6 (length) Side view: 2.25 (width), 1.2 (height) Front view: 1.9 (width), 3.4 (length) PCB Layout: 5.0 (width), 3.4 (length), 2-Ø0.5 (holes), 2-Ø0.7 (holes) 	<p>Circuit diagram for TAHPAM04: Terminal ① is connected to Terminal ②, and Terminal ③ is connected to Terminal ④.</p>