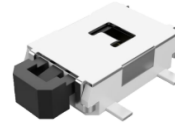


▶ Product Features

- Multiple options of force
- Stronger body
- RoHS Compliant



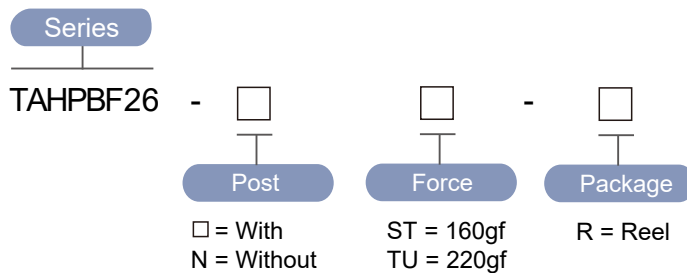
▶ Materials

Part Name	Base	Cover	Stem	Contact	Terminal
Material	LCP	SUS	PA46	SUS Ag plated	Brass Ag plated

▶ Specification

Operating Force	160, 220gf
Actuator Travel	0.30 ±0.1mm
Operating Temperature Range	-20°C ~ 70°C
Storage Temperature Range	-40°C ~ 85°C
Voltage Rating	50mA, 12VDC
Actuation Life Cycle	100,000 times
Insulation Resistance	100 MΩ min @ 100VDC
Dielectric Strength	250VAC for 1 minute
Contact Resistance	100mΩ max

▶ Part Number



► Diagram

NO.	Dimensions	Circuit
TAHPBF26	<p>PCB Layout</p>	
TAHPBF26-N	<p>PCB Layout</p>	