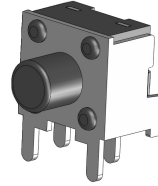


▶ Product Features

- Multiple options of force & height
- Multiple options of stem color
- Available for wave & reflow
- RoHS Compliant



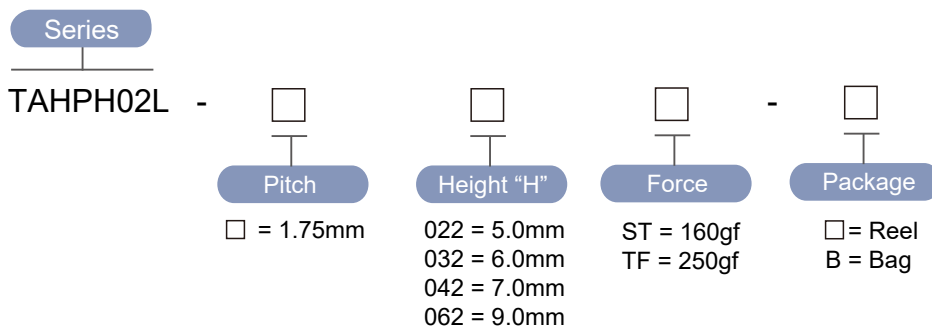
▶ Materials

Part Name	Base	Cover	Stem	Contact	Terminal
Material	PA6T	Brass CuSn plated	PA6T	SUS Ag plated	Brass Ag plated

▶ Specification

Operating Force	160, 250gf
Actuator Travel	0.25 ±0.1mm
Operating Temperature Range	-20°C ~ 70°C
Storage Temperature Range	-40°C ~ 85°C
Voltage Rating	50mA, 12VDC
Actuation Life Cycle	160gf : 100,000 times ; 250gf : 50,000 times
Insulation Resistance	100 MΩ min @ 100VDC
Dielectric Strength	250VAC for 1 minute
Contact Resistance	100mΩ max

▶ Part Number



► Diagram

NO.	Dimensions	Circuit
TAHPH02L		