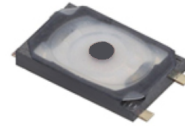


▶ Product Features

- IP68 Proof
- Tiny type
- RoHS Compliant



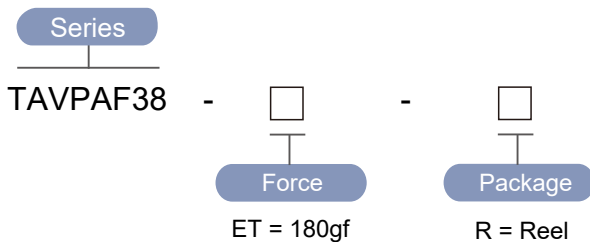
▶ Materials

| Part Name | Base | Tape | Stem | Contact | Terminal |
|-----------|------|----------|----------|------------------|------------------------------|
| Material | PA6T | Polymide | Polymide | SUS Ag plated | Phosphor bronze Ag plated |

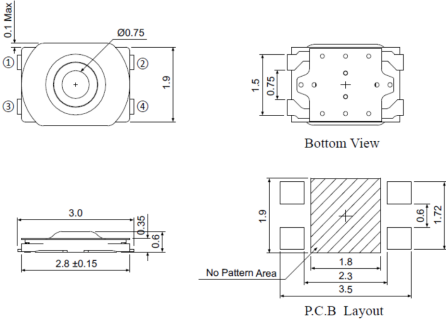
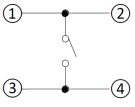
▶ Specification

| | |
|-----------------------------|---------------------|
| Operating Force | 180gf |
| Actuator Travel | 0.13 ±0.05mm |
| Operating Temperature Range | -40°C ~ 85°C |
| Storage Temperature Range | -40°C ~ 85°C |
| Voltage Rating | 20mA, 15VDC |
| Actuation Life Cycle | 300,000 times |
| Insulation Resistance | 100 MΩ min @ 100VDC |
| Dielectric Strength | 100VAC for 1 minute |
| Contact Resistance | 500mΩ max |

▶ Part Number



► Diagram

| NO. | Dimensions | Circuit |
|----------|--|--|
| TAVPAF38 |  <p>The technical drawings include: <ul style="list-style-type: none"> Top View: Shows a square component with a diameter of 00.75 and a height of 0.1 Max. Terminals are labeled ①, ②, ③, and ④. Bottom View: Shows the underside of the component with a width of 1.5 and a height of 0.75. PCB Layout: Shows the component's footprint on a PCB with dimensions 1.9, 0.6, 1.72, 1.8, 2.3, and 3.5. A hatched area is labeled "No Pattern Area". Side View: Shows a length of 3.0, a width of 2.8 ± 0.15, and a thickness of 0.6. </p> |  <p>The circuit diagram shows a switch that connects terminal ① to terminal ② and terminal ③ to terminal ④.</p> |