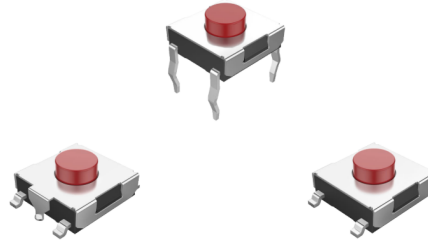


► Product Features

- Multiple options of stems & force
- Multiple color of stem
- Options with ground pin
- RoHS Compliant



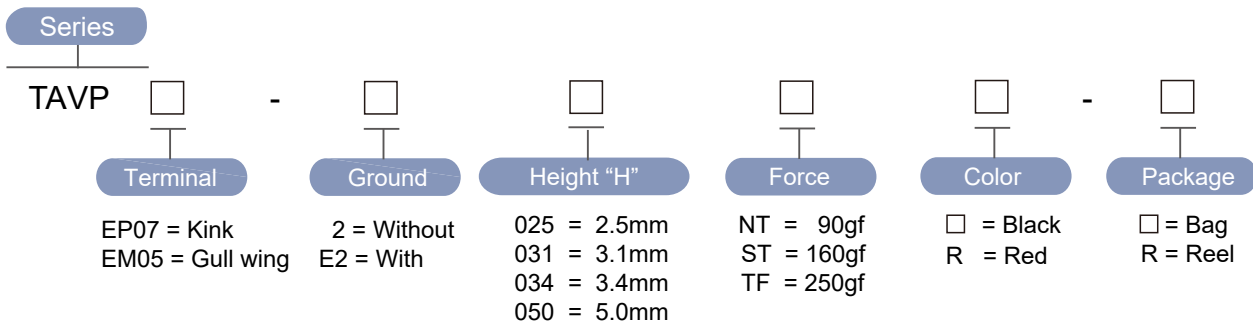
► Materials

Part Name	Base	Cover	Stem	Contact	Terminal
Material	PA6T	SUS Ag plated	PPA or PA6T	SUS Ag plated	Brass Ag plated

► Specification

Operating Force	90, 160, 250gf
Actuator Travel	0.25 ±0.1mm
Operating Temperature Range	-20°C ~ 70°C
Storage Temperature Range	-40°C ~ 85°C
Voltage Rating	50mA, 12VDC
Actuation Life Cycle	300,000 times (90/160gf) ; 100,000 times (250gf)
Insulation Resistance	100 MΩ min @ 100VDC
Dielectric Strength	250VAC for 1 minute
Contact Resistance	100mΩ max

► Part Number



► Diagram

NO.	Dimensions	Circuit
TAVPEP07-2		
TAVPEP07-E2		
TAVPEM05-2		
TAVPEM05-E2		