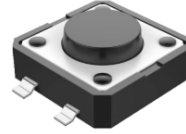


### ▶ Product Features

- Large operational stem
- Multiple options of stems & force
- Multiple color of stem
- Boss at bottom for better positioning
- RoHS Compliant



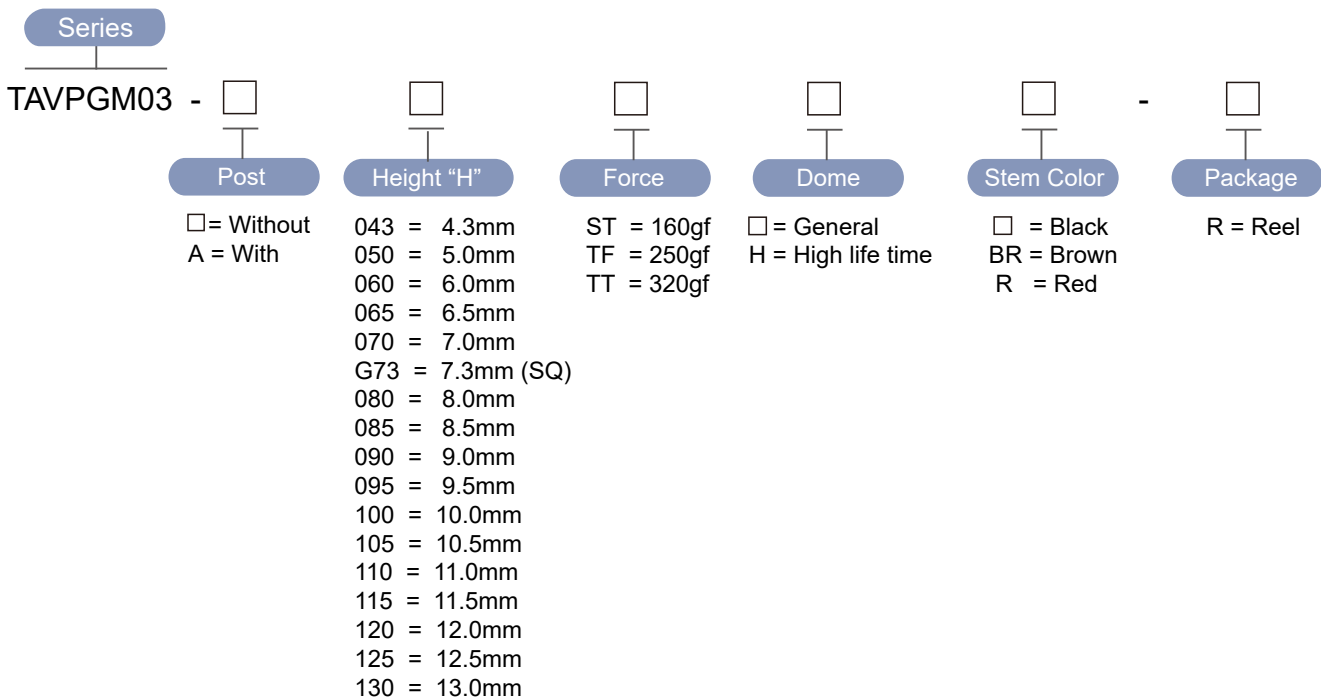
### ▶ Materials

Part Name	Base	Cover	Stem	Contact	Terminal
Material	PA6T	Iron	PA6T	Phosphor Bronze Ag plated	Brass Ag plated

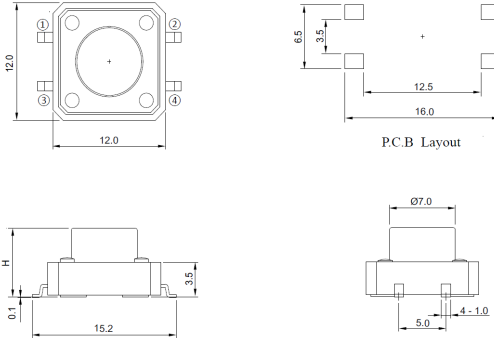
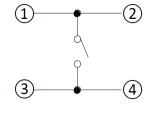
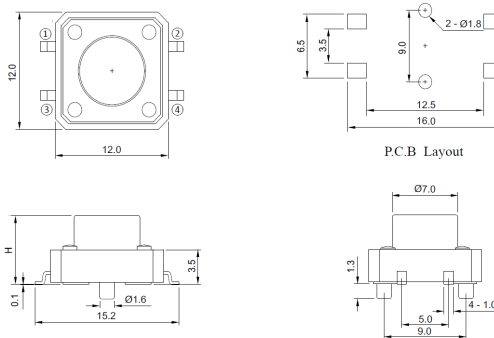
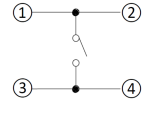
### ▶ Specification

Operating Force	160, 250, 320gf
Actuator Travel	0.35 ± 0.1mm
Operating Temperature Range	-20°C ~ 70°C
Storage Temperature Range	-40°C ~ 85°C
Voltage Rating	50mA, 12VDC
Actuation Life Cycle	□ = 200,000 times (160gf)      H = 1,000,000 times (160gf) 100,000 times (250/320gf)      300,000 times (250/320gf)
Insulation Resistance	100 MΩ min @ 500VDC
Dielectric Strength	250VAC for 1 minute
Contact Resistance	100mΩ max

### ▶ Part Number



► Diagram

NO.	Dimensions	Circuit
TAVPGM03		
TAVPGM03-A		
TAVPGM03-G73	